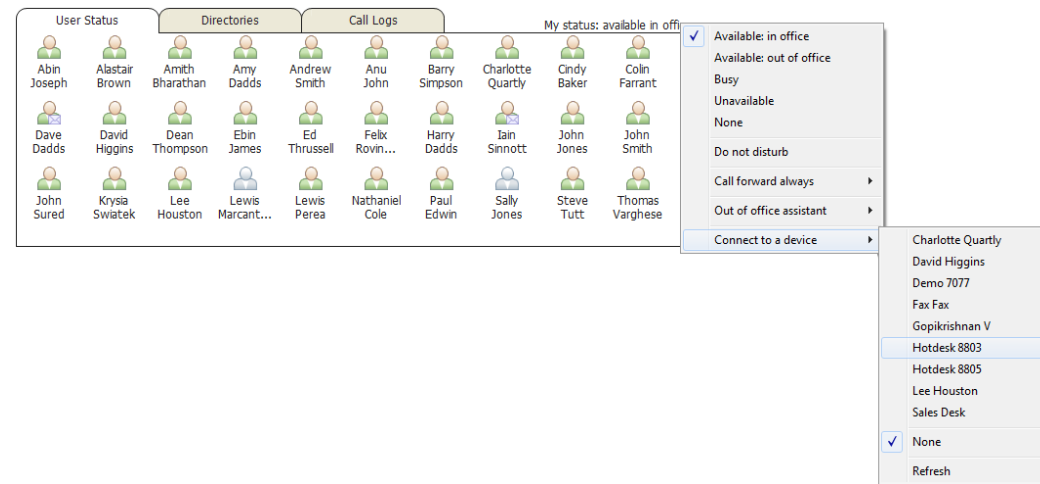
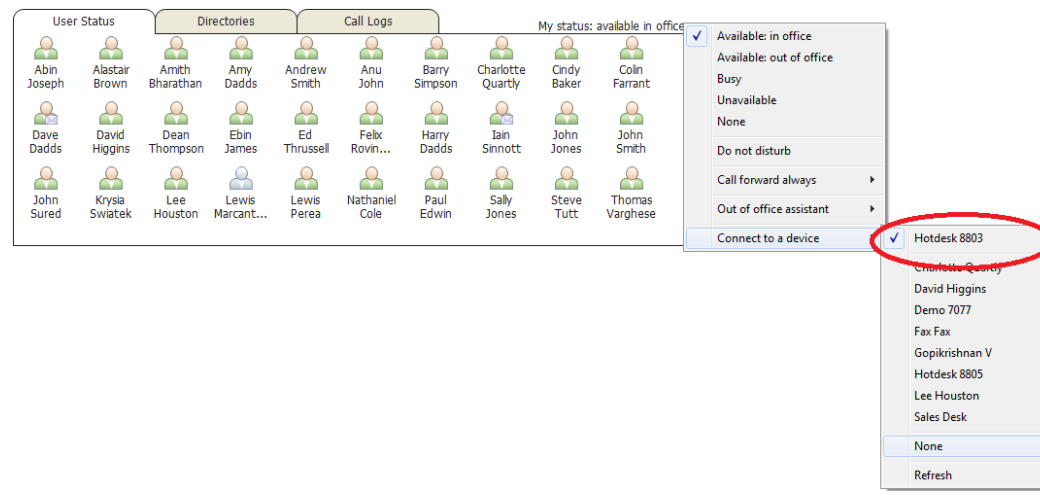


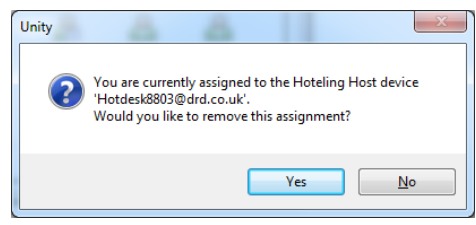
Hoteling Guest allows the user to connect to a device, to attach the user account to a device, select the device from the menu option below. Please note that only available devices [that aren't already in use] will be displayed.



There is no visual notification that the user account is attached to a device, other than if the user clicks in the My Status link, in which case they will see the device is ticked.



When Unity is closing it will prompt the user to remove the device attachment.



If the user clicks no they will continue to be attached to the device until the association is automatically ceased by the VoIP platform.